



INSTALLATION INSTRUCTIONS

Garage Door Sensor Model: GS-MT



Congratulations on your purchase of the Skylink Garage Door Sensor, Model: GS-MT. The sensor will monitor the status of your garage door and works with the SkylinkNet Internet Hub and the Skylink M-Series Alert/Alarm System.

Section 1 - Insert a battery in the Garage Door Sensor



NOTE: The battery for the Sensor is not included. Please refer to instruction below to insert an AAA Alkaline Battery.

1. Press both sides and open the cover of the Garage Door Sensor.



2. Insert an AAA Battery in the sensor and close the cover.



Safety Information

This device complies with Part 15 of the FCC Rules. Operation is subject to the following two conditions: (1) This device may not cause harmful interference, and (2) This device must accept any interference received, including interferences that may cause undesired operation.

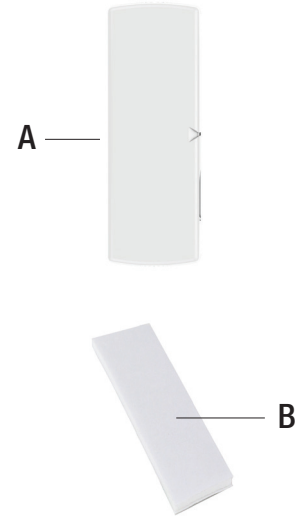
WARNING:

Changes or modifications to this unit not expressly approved by the party responsible for compliance could void the user's authority to operate the equipment.

CE - DECLARATION OF CONFORMITY:

This equipment complies with the requirements relating to electromagnetic compatibility, EN 301489-1, EN301489-3, EN300220-1, EN300220-2 and EN60950-1. This equipment conforms to the essential requirement of the 1999/5/EC R&TTE Directive.

Package Contents



Parts	Description	Quantity
A	Garage Door Sensor	1
B	Double-sided tape	1

Section 2 - Programming the Sensor with M-Series Main Console



NOTE: You can program in total up to 4 sensors in one zone. If you try to program the fifth sensor, the first sensor will be removed.

1. Press the learn button on the back of the M-Series Main Console for 3 seconds until the Zone 1 light is flashing.



2. Zone 1 is selected. Press the learn button to select the zone you want to program the sensor.



3. Activate the Sensor by tilting it from vertical to horizontal.



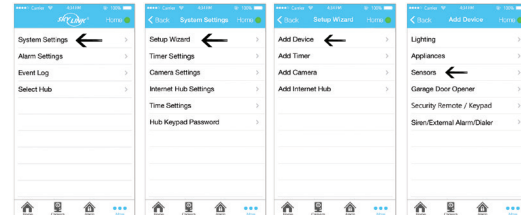
4. Once the sensor is programmed, the Main Console will beep once and the corresponding zone led will be off.



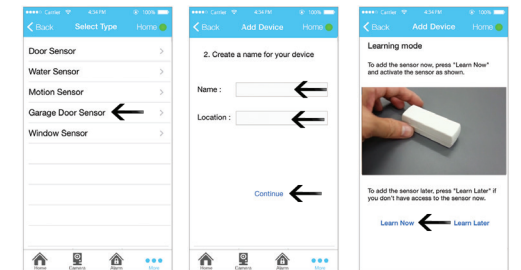
Section 3 - Programming the Sensor with SkylinkNet Internet Hub



NOTE: Programming the sensor with the SkylinkNet Internet Hub must be done from the SkylinkNet App.



1. Go to "More" and tap on "System Settings".
2. Tap on "Setup Wizard".
3. Tap on "Add Device".
4. Tap on "Sensors".



5. Tap on "Garage Door Sensor".

6. Name your Sensor, location and tap "Continue".

7. Tap on "Learn Now" and follow the video to activate the sensor.