

# Houselink® Garage Door Receiver Model 318R

## 1. INTRODUCTION

In this package, you will find a garage door receiver, a red / black wire and a clip.



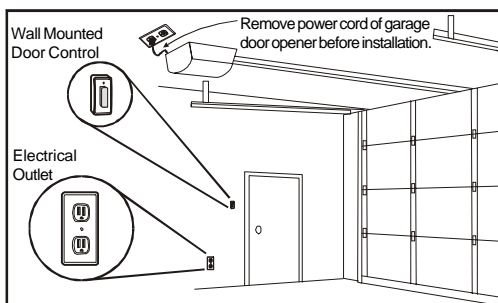
## 2. INSTALLATION

The following instructions will show you how to install the receiver. After installing, the keychain transmitter can be used to operate your garage door opener.

You need to locate 2 things inside your garage to install the receiver:

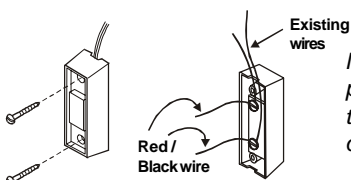
- 1) the wall-mounted door control;
- 2) an electrical outlet, select an electrical outlet different from the one already connected to the power cord of the garage door opener to reduce the chance of interference. The further distance between the receiver and the garage door opener, the less interference between 2 devices.

*Note: The length of the red/black wire is 20ft, so the receiver must be plugged into an electrical outlet that is within 20ft of the wall mounted door control. If there is no electrical outlet within 20ft of the wall mounted door control, an extension cord can be used for temporary installation.*



**WARNING** Unplug the power cord of your garage door opener before installation to ensure power is not connected.

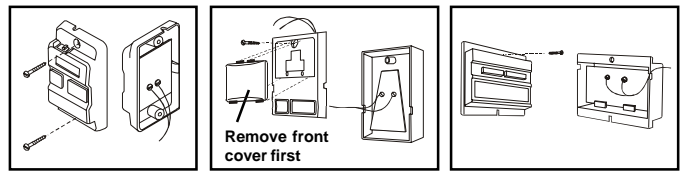
- 1 Remove the wall-mounted door control from the wall by removing the screws. Connect the stripped ends of the Red/Black wire to the 2 terminals (2 screws) on the back of the wall mounted door control. (Polarity does not matter.)



*Note: There should be another pair of wires connected to the 2 terminals already. Do not remove/disconnect these existing wires.*

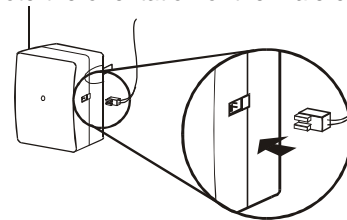
## 2. INSTALLATION (CONT)

*Note: If you see no screws mounting the wall mounted door control, the screws are probably underneath the front cover. Remove the front cover by pressing onto the tabs on top of the cover.*

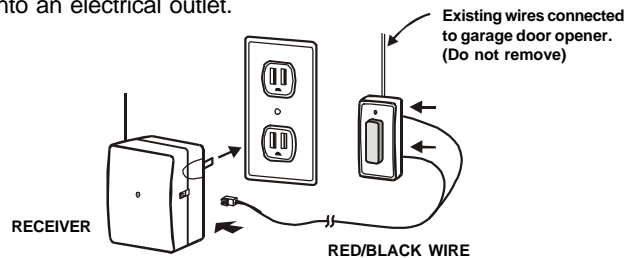


### Different wall-mounted door controls

- 2 Plug in the connector end of the Red/Black wire to the 318TR receiver. Note the orientation of the male & female connector.



- 3 Plug the receiver into an electrical outlet inside the garage. The red light on the receiver should be on after being plugged into an electrical outlet.



*Note: Alternative wiring options are available, the receiver can be connected directly to the opener's motor. Please contact customer service for further information regarding alternative wiring options.*

- 4 Re-connect the power cord of the Garage Door Opener.
- 5 The Left button on the transmitter has been programmed to operate the receiver. Activate this button will trigger the receiver therefore opens the garage door.

## 3. TROUBLE SHOOTING

*Q: Door opener does not react after pressing the button on the transmitter ?*

- A:
- Ensure when the button on the transmitter is pressed, the red light on the transmitter comes on. Otherwise, check if the battery is inserted properly.
  - The left button on the transmitter should be pressed, not the right button
  - If the red light on the receiver flashes when you press the left button on the transmitter, but the door opener does not respond, please ensure the red/black wire is successfully connected from the receiver to the wall mounted door control.
  - Ensure the wires that are previously connected to the wall mounted door control are not loose.
  - Ensure the code setting on the transmitter is the same as the receiver. Refer to section 4 to check the code setting.

## 4. CHANGE THE OPERATION CODE FOR RECEIVER

It is recommended to randomly set the operation code for your remote control to avoid interference from other devices. Follow the instructions below to change the operation code.

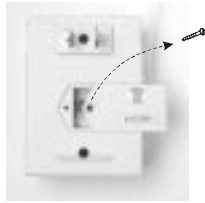
This instruction does not demonstrate how the transmitter should be installed, please refer to the user's instructions of the transmitter.

#### 4. CHANGE THE OPERATION CODE FOR RECEIVER (CONT)

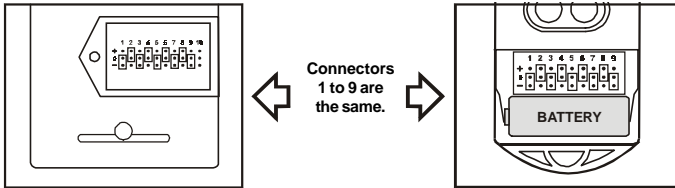


Remove the receiver from the electrical outlet before changing the code.

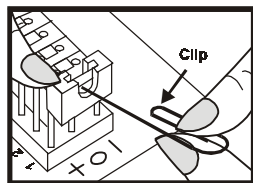
- 1 Remove the screw that holds the connector cover, and remove the cover.



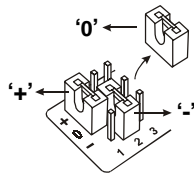
- 2 You will see 10 connectors. For connectors "1" to "9", the settings must match with those of the transmitter.



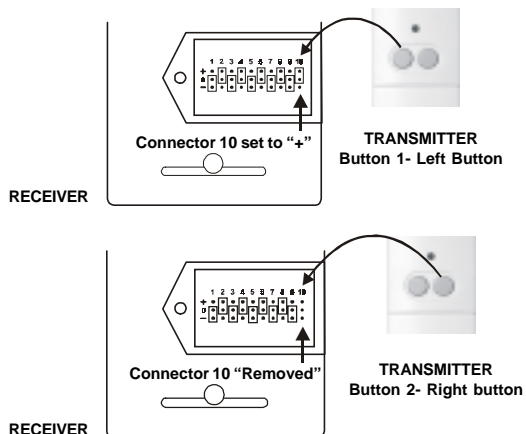
- 3 You can randomly remove some connectors, leaving some in place. A connector can be removed with the clip, as shown.



- 4 If the connector is placed on the top and middle posts, that column is set on "+". If the connector is placed on the middle and bottom posts, that column is set on "-". If the connector is removed completely, (not placed on any posts), it is set to "0". (see diagram for examples of how to set a column to the three different positions). When removing a connector to set a column to "0", save the connector in case you change the code at a later date.



- 5 For connector "10" on the receiver, set the connector on "+" if you are using button "1" to control this receiver. If you are planning to use button "2" to control this receiver, you need to remove this connector. See diagram below.



- 6 Put the cover and screw back onto the receiver. Plug the receiver into an electrical outlet.

- 7 Put the battery cover back onto the transmitter.

#### 5. ADDITIONAL TRANSMITTER

You can add as many additional transmitters as you want to control the same receiver. Simply set the same operation code on all transmitters with the same code setting on the receiver. Houselink® offers Keychain Transmitter Model 318TN and Keyless Entry Transmitter Model 318K to work with your receiver. For more information, please visit our website at [www.skylinkhome.com](http://www.skylinkhome.com) or contact us.



#### 6. CAUTION

**RISK OF ELECTRICAL SHOCK. FOR INDOOR USE ONLY.**  
**CAUTION : DISCONNECT POWER BEFORE CODE CHANGING.**  
**REPLACE COVER AFTER CODE CHANGING.**

Maximum Rating:  
 Input : 120VAC 60Hz 2W

#### 7. FCC

This device complies with Part 15 of the FCC Rules. Operation is subject to the following two conditions: (1) This device may not cause harmful interference, and (2) This device must accept any interference received, including interference that may cause undesired operation.

**WARNING:**  
 Changes or modifications to this unit not expressly approved by the party responsible for compliance could void the user's authority to operate the equipment.

**NOTE:**  
 This equipment has been tested and found to comply with the limits for a Class B digital device, pursuant to Part 15 of the FCC Rules. These limits are designed to provide reasonable protection against harmful interference in a residential installation. This equipment generates, uses and can radiate radio frequency energy and, if not installed and used in accordance with the instructions, may cause harmful interference to radio communications.

However, there is no guarantee that interference will not occur in a particular installation. If this equipment does cause harmful interference to radio or television reception, which can be determined by turning the equipment off and on, the user is encouraged to try to correct the interference by one or more of the following measures:

- Reorient or relocate the receiving antenna.
- Increase the separation between the equipment and receiver.
- Connect the equipment into an outlet on a circuit different from that to which the receiver is connected.
- Consult the dealer or an experienced radio/TV technician for help.

#### 8. WARRANTY

If, within one year from date of purchase, this product should become defective (except battery), due to faulty workmanship or materials, it will be repaired or replaced, without charge. Proof of purchase and a Return Authorization are required.

#### 9. CUSTOMER SERVICE

If you would like to order Skylink's products or have difficulty getting them to work, please :

1. visit our FAQ website at [www.skylinkhome.com](http://www.skylinkhome.com), or
2. email us at [support@skylinkhome.com](mailto:support@skylinkhome.com) (reply within 24 hrs), or
3. call our toll free at 1-800-304-1187 from Monday to Friday, 9 am to 5 pm EST.  
 Fax +800 286-1320

#### CUSTOMER SERVICE

17 Sheard Avenue, Brampton, Ontario, Canada L6Y 1J3  
 Email: [support@skylinkhome.com](mailto:support@skylinkhome.com) (Reply within 24 hrs)  
<http://www.skylinkhome.com>  
 P/N. 101A262-001 Rev.1  
 ©2003 SKYLINK GROUP